

 **Vanilla** 7

New Features

Content

1	Introduction.....	3
1.1	Main new features of version 7	4
2	Evolution of Components	5
3	Additional Features	6
3.1	Portal Reports and Documents	6
3.2	Vanilla Hub Enhancements	7
3.3	Architect Enhancements.....	9
3.4	BiGateWay : support json file.....	10

1 Introduction

This documentation presents the latest innovations and functions available with version 7 **OF THE VANILLA PLATFORM**

“Platform Architecture

Birt

Data4Citizen

Portal

Report

Architect,

Vanilla Hub

BiGateWay

”



1.1 Main new features of version 7

Version 7 of the Vanilla platform is mainly a technical version upgrade on the main components of the platform

- Component Update: Eclipse 18.12, Java 8, Solr 7, Jetty 9 & Tomcat 9
- Evolution of the architecture: separation of Runtime and WebApps
- Update of the Birt version to version 4.8 (beta version 4.9 compatible)
- Data4Citizen 21.1 update (including new API for datasets management)
- Update of cartographic functions: pooling of resources, update of ArcGis APIs, improved support for the WFS protocol

Some additional features are added for this version

- Portal reports and documents
 - Report validation cycle management (comments and validation, multiple levels)
 - Possibility to manage value entries in Birt reports, for example comments in graphs or values for simulations
- Vanilla Hub enhancements
 - Improved support for Open Data sources
 - Support for files transmitted to mailboxes
 - Possibility of linking a Vanilla Hub WorkFlow with an Architect contract
- Architect improvement
 - Metadata management
 - Possibility of triggering Workflows (in addition to ETL)
- BiGateWay improvement
 - Support for json file input

2 Evolution of Components

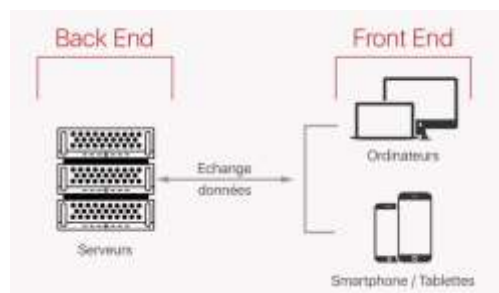
By default, the distribution of Vanilla7 is powered by a Jetty9 server



Development studios run natively under Java8



Vanilla Runtime is by default separate from WebsApps, and works under another Jetty container, which facilitates the setting up of server clusters (separation of restitutions accessible in front from the portal with an ETL transformation processing server, by example)



Vanilla7 is compatible with version 21.6 of Data4Citizen, our Open Data platform, including an update of the API for managing datasets from Vanilla7



Vanilla7 improves its support for the WFS protocol, and the support of GeoServer



3 Additional Features

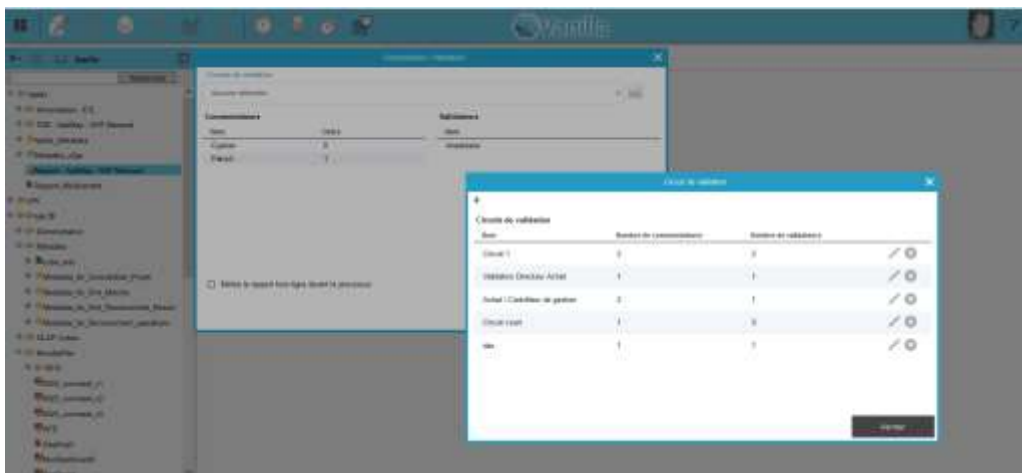
3.1 Portal Reports and Documents

Report validation cycle management

The interface provides access to a comment management function and to the implementation of a validation circuit on the report, with multiple levels of validators.

Business circuits can be prepared to facilitate the deployment of this function to users

Interface for starting a validation circuit for a report



Ability to manage value entries in Birt reports

It is possible for report developers to set up access to data entry interfaces, for example comments in graphs or values for simulations

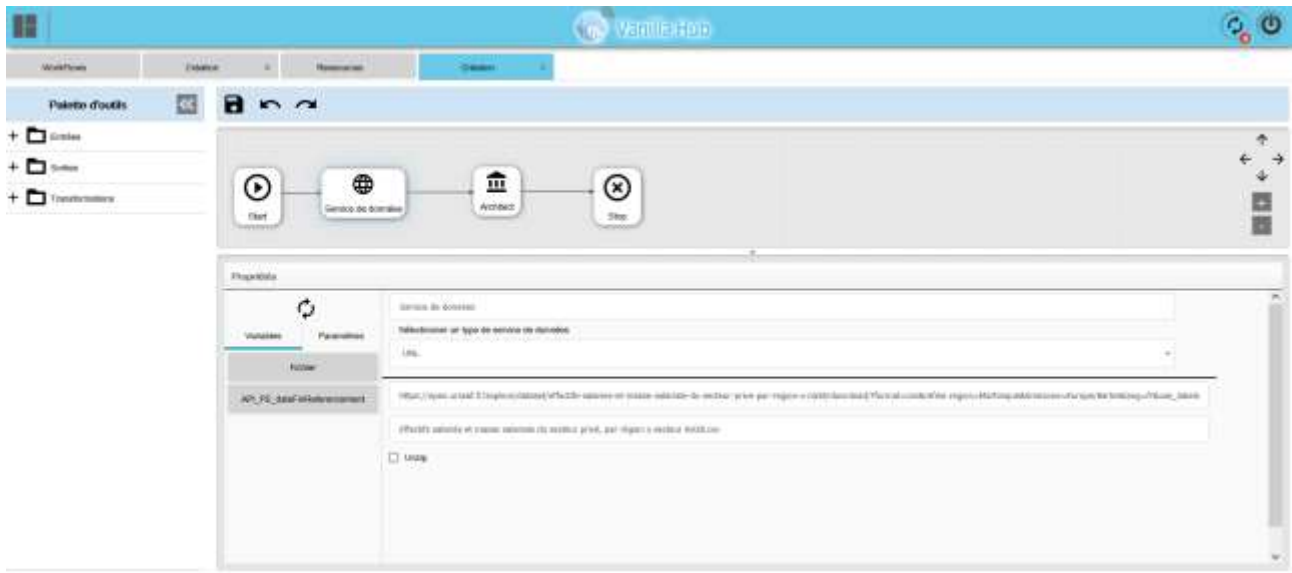
Interface for selecting the types of data available for entry



3.2 Vanilla Hub Enhancements

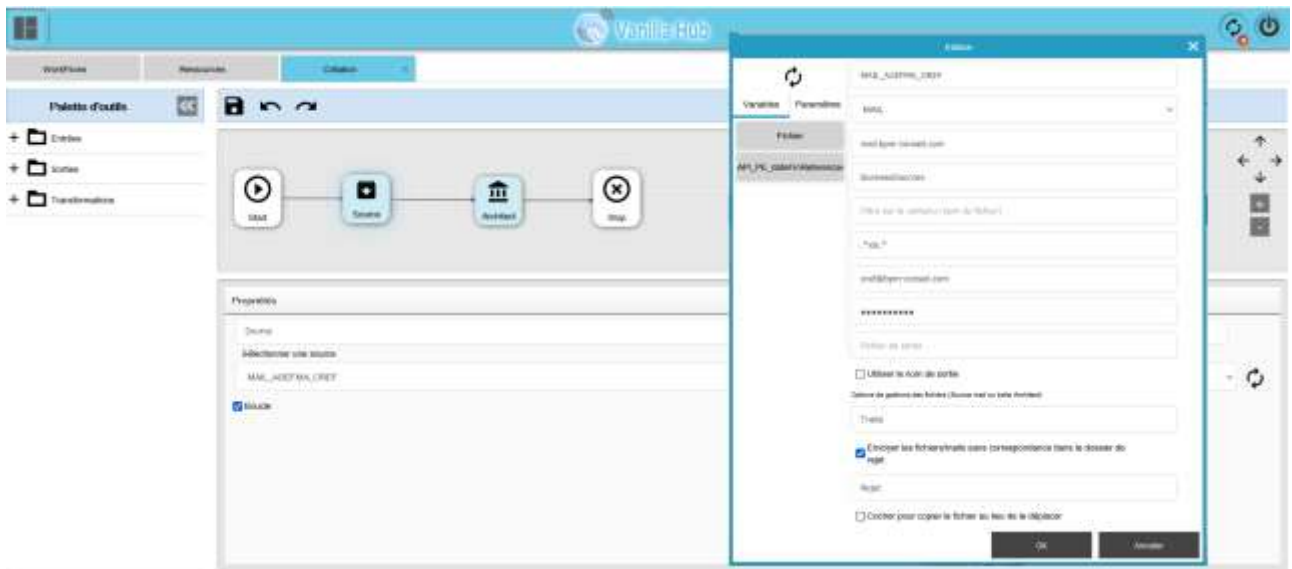
Data Improved support for Open Data sources

The process of integrating data from Open Data sites has been improved to facilitate the development of applications for the massive integration of external data into business intelligence systems



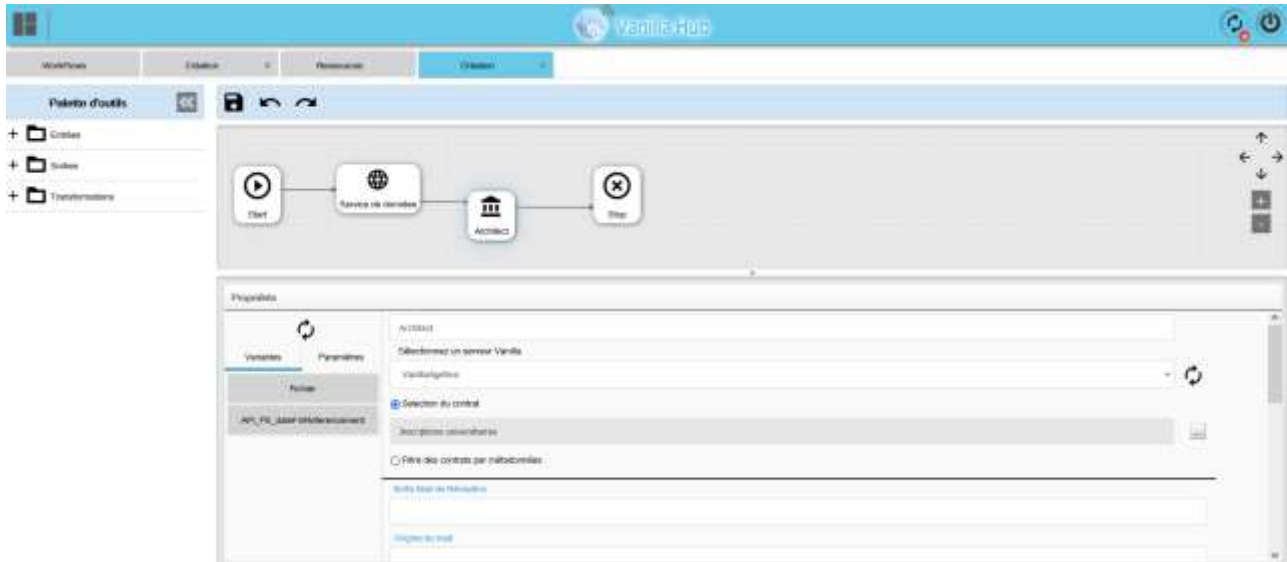
Support for files sent to mailboxes

The "Mailbox" data sources are now available, which allows external users to send their data files to a generic mailbox in addition to the deposit files on a shared space or on an ftp server.



Possibility of linking a Vanilla Hub WorkFlow with an Architect contract

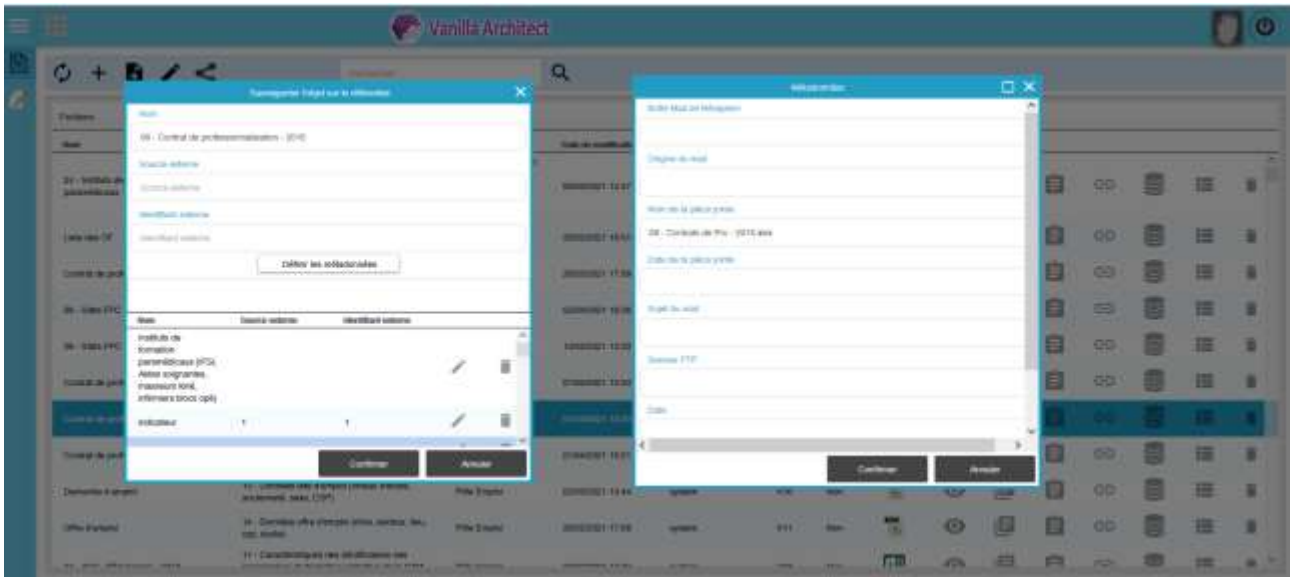
It is now possible to associate a Vanilla Hub WorkFlow with a reference in the Vanilla Architect file catalog, so that the file is saved directly as a new file version in Vanilla Architect, possibly starting the process defined at the Architect contract level



3.3 Architect Enhancements

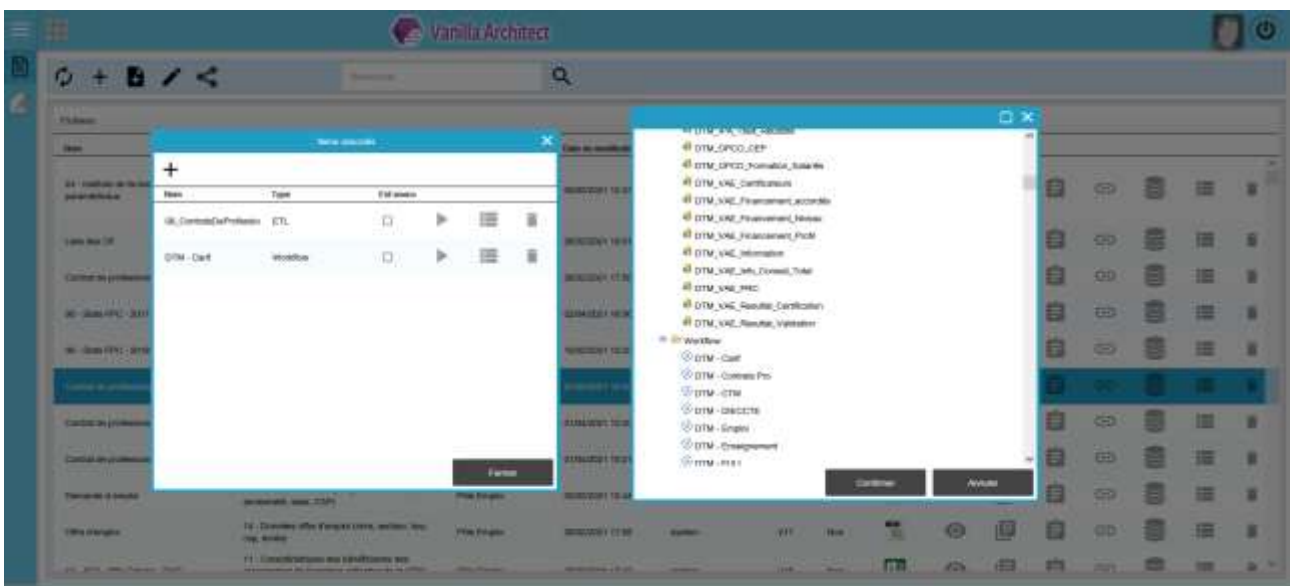
Metadata management

Metadata can be defined for each Architect contract, Metadata which is used by Vanilla Hub as data allocation rules managed by Vanilla Hub when the data target is generic



Possibility to trigger Workflows

In addition to being able to define ETL transformations, the Architect interface now allows you to select Vanilla Workflows to set up more complex processes using the data files of Architect contracts



3.4 BiGateway : support json file

BiGateway offers support for json file input

